




Setting Up a Wireless Connection

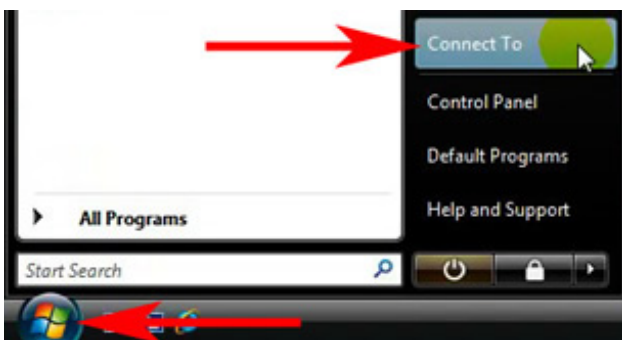
Wirelessly connect Windows Vista to a Vodafone HG658c modem

Before you begin this tutorial ensure that your computer's wireless network adapter is enabled. The procedure of enabling the wireless adapter is different depending on your computer model so consult the manufacturer's instructions if you need assistance.

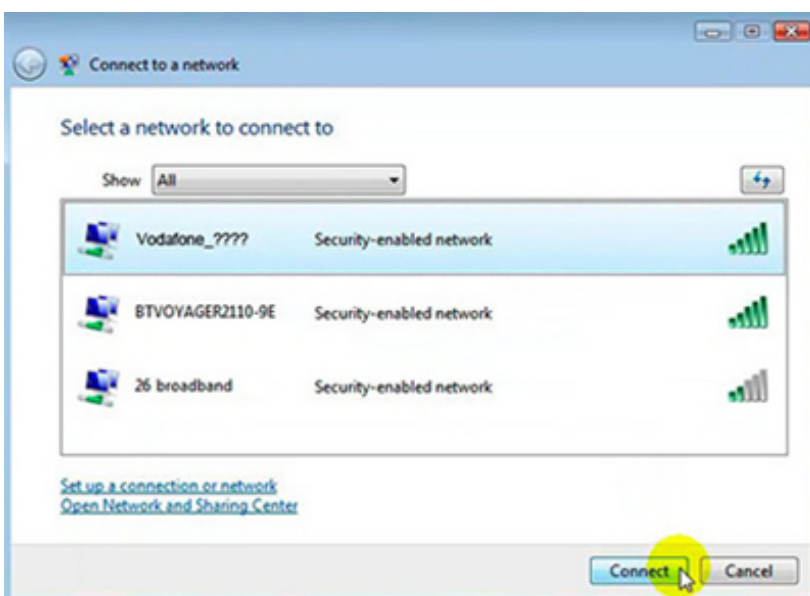
1. Place your computer close to the modem so you are getting a good signal during setup. Ensure your Vodafone modem is powered on. The *Power*, *Link*, *Internet* and *WiFi* lights should all be lit green.



2. Click **Start**  and then click **Connect To**.

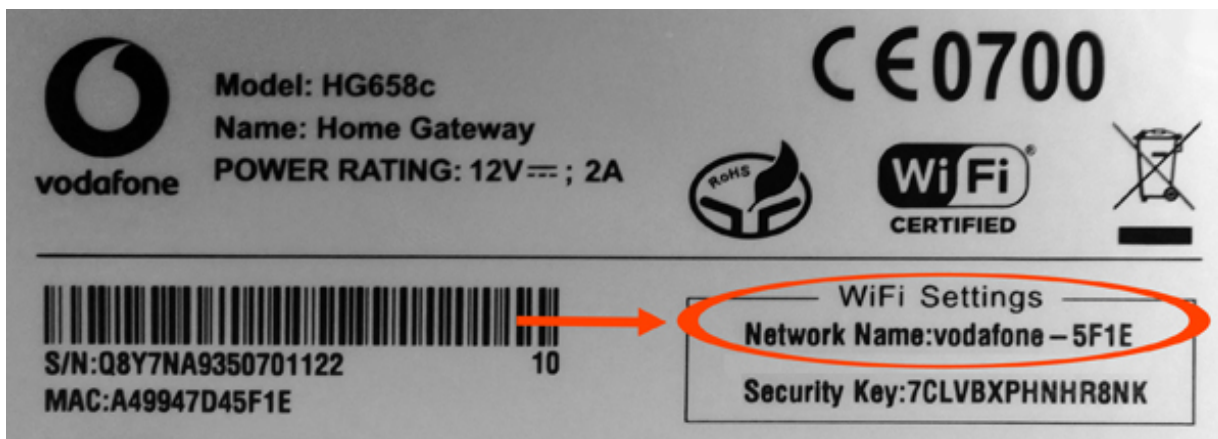


3. In the **Select a network to connect to** window, choose your Vodafone modem's wireless network then click **Connect**.




If more than one **Vodafone** network appears in the list, your own network can be identified as the **Network Name** printed on the label on the **back** of your modem.

Tip: In the example shown to the left, the Network Name is **vodafone-5F1E**.



If no Vodafone wireless network appears in the list, check that your modem is correctly installed and switched on. Both the Power and WiFi lights should be lit green.

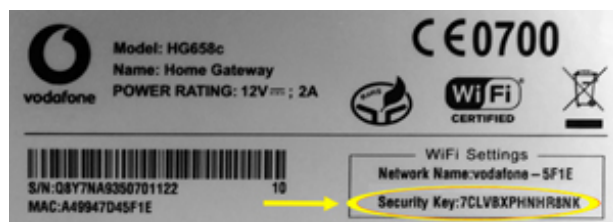
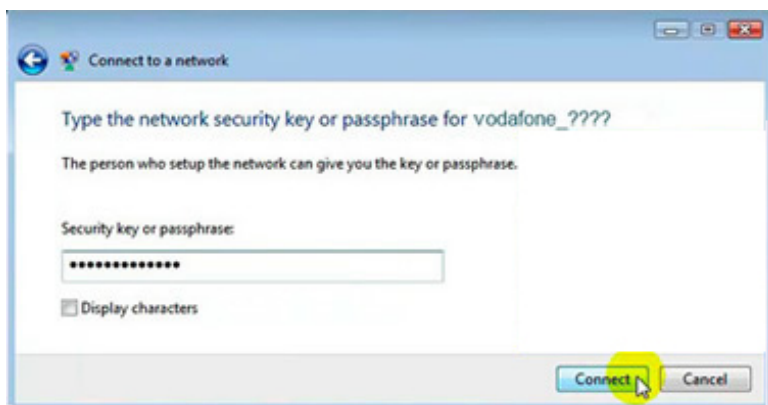
Your computer might also be out of range so move closer to your Vodafone modem to reduce the distance. Then click the refresh  button.

4. You will now be prompted to **Type the network security key or passphrase** for your Vodafone wireless network.

Your **Security Key** can be found on the label on the **back** of your Vodafone modem.

Type your Security Key in to the "**Security key or passphrase**" box.

Then click **Connect**.



5. If you entered the Security Key correctly then the "**Successfully connected to ...**" window will appear, ensure that both of the check boxes shown are ticked:

- Save this network**
- Start this connection automatically**

6. Click **Close**.

7. If both the Link and Internet lights on your Vodafone modem are solid green (i.e. not flashing) then you should now be able to browse websites wirelessly. Open your Internet browser and try a few of your favourite sites.

---End