



Using the Home Storage Function

Windows XP

To begin, connect a portable storage device to any of the USB ports on the HG556a terminal.

Click on one of the following three links for instructions for your preferred method of accessing the files on your USB storage device.

1. Mapping a Network Drive

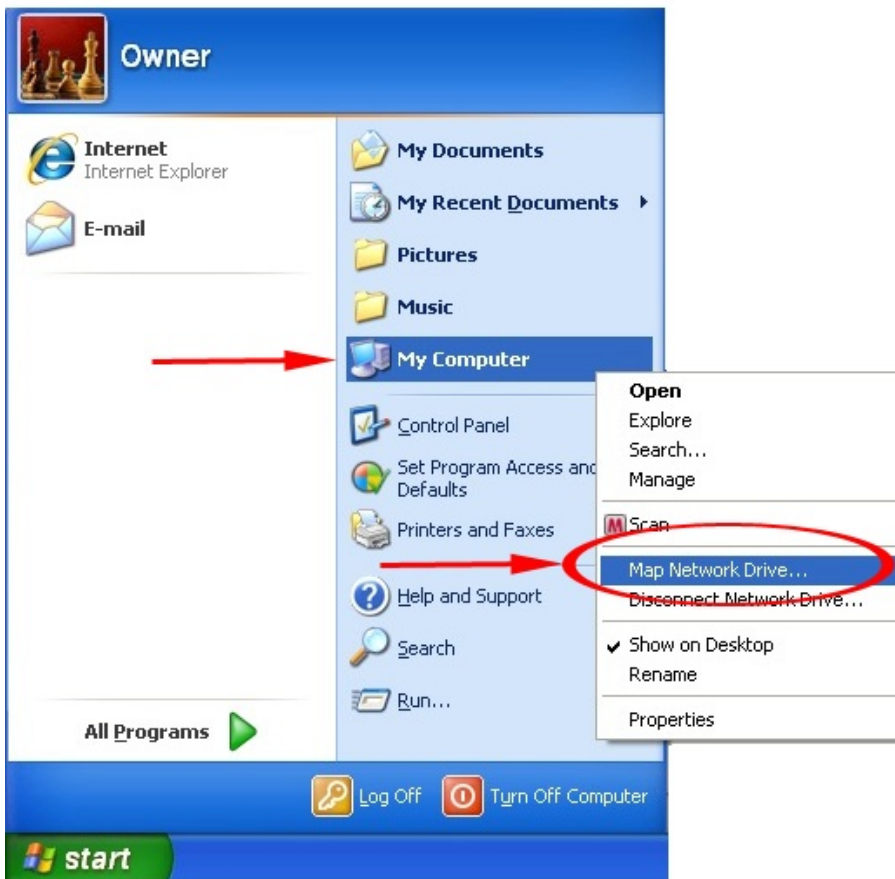
2. Samba Function

3. FTP Client

Method 1: Accessing the Storage Device by Mapping a Network Drive

The terminal allows you to access the portable storage device by mapping as a network drive, do as follows:

1. Click **Start**, right-click **My Computer**. Choose **Map Network Drive...**



2. Specify the drive name (take X as an example) in the **Drive:** drop-list menu.

3. Enter the following path for the shared folder **\\192.168.1.1\share**

If you would like your shared folders to be available whenever you turn on your computer, place a check mark beside 'Reconnect at logon'.

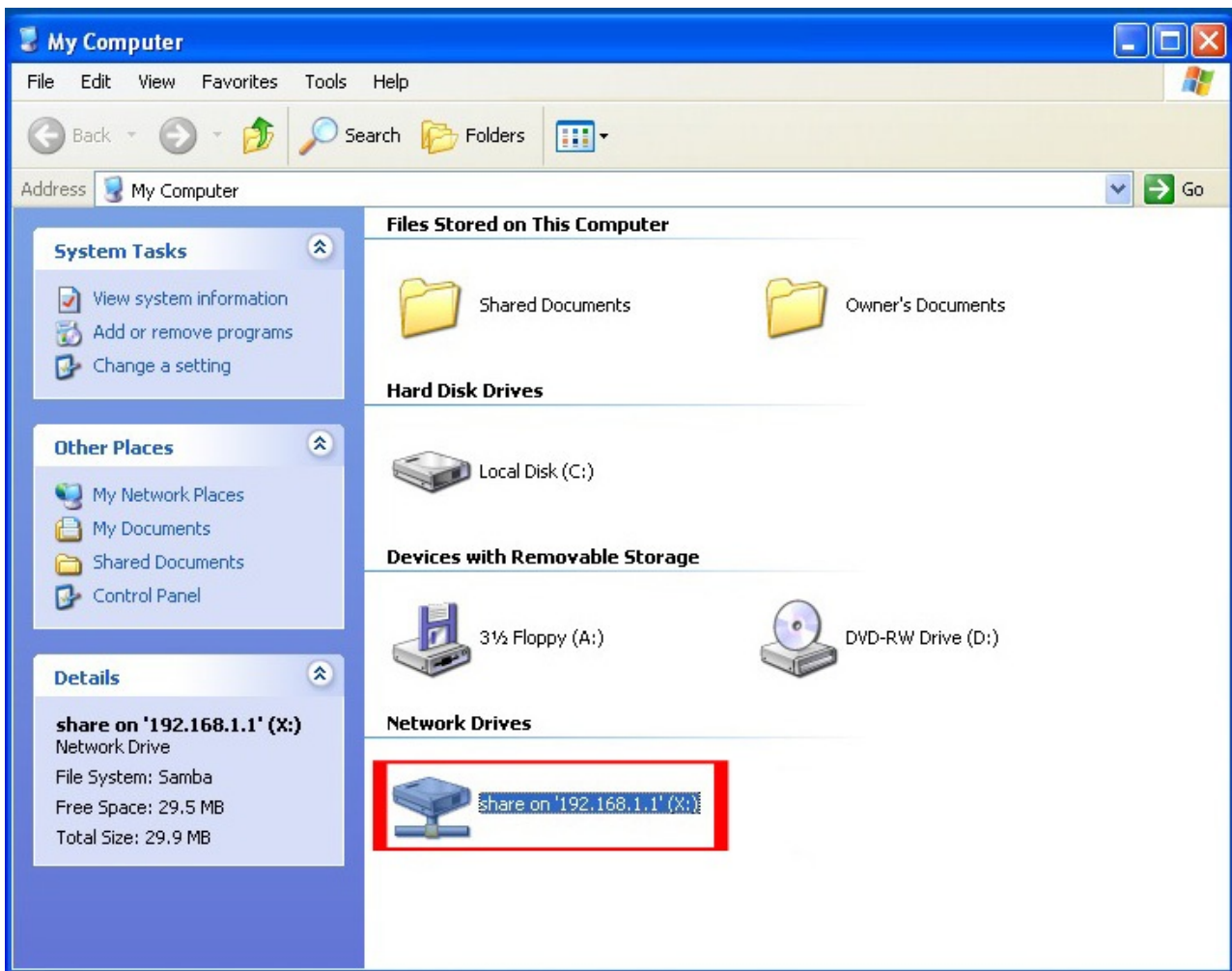
4. Click **Finish**.



5. In the future, to view the content stored on your portable device simply click **Start**, then **My Computer** then double click the X network drive icon.

If you have inserted one USB storage device you will see a folder named USBDisk_1. Double click the **USBDisk_1** folder to see the folder structure and the files stored on your portable device.

If you attach additional USB storage devices they will be listed as folders named USBDisk_2 and USBDisk_3.



---End

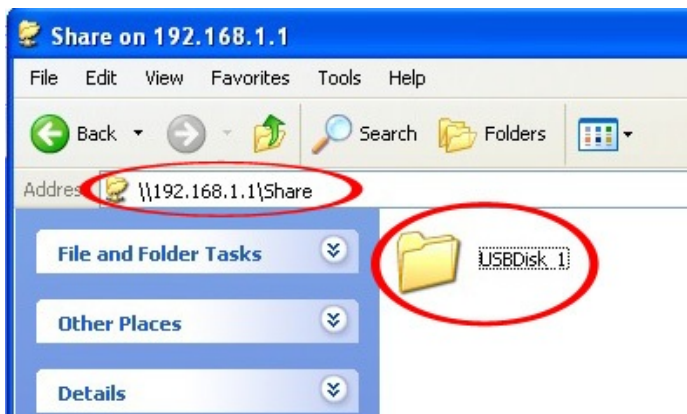
Method 2: Accessing the Storage Device by the Samba Function

To access the portable storage device by the Samba Function, do as follows.

1. Launch Internet Explorer and type **\\192.168.1.1\Share** into the address bar, then press **Enter** on your keyboard to display the Share

folder.

2. If you have inserted one USB storage device you will see a folder named USBDisk_1. Double click the **USBDisk_1** folder to see the folder structure and the files on stored your portable device.



3. If you attach additional USB storage devices they will be listed as folders named USBDisk_2 and USBDisk_3.

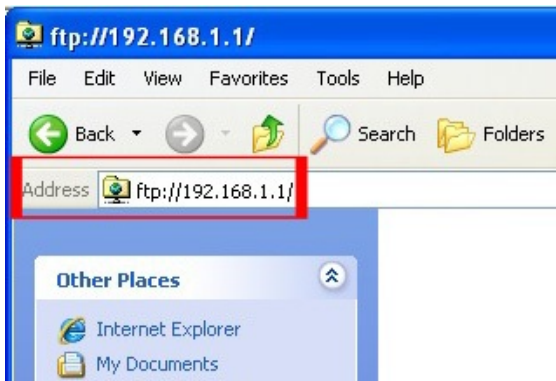
---End

Method 3: Accessing the Storage Device by the FTP Client

To access the portable storage device by the FTP client, do as follows:

1. To view the FTP site in Windows Explorer click **Start**, then **My Computer**, type <ftp://192.168.1.1> into the address bar and press

Enter on your keyboard.



2. When prompted, use the following details to log on to FTP server:

User name: **vodafone**

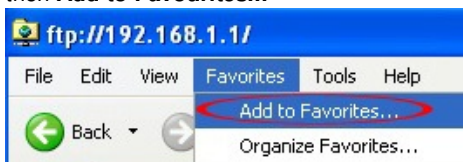
Password: **vodafone**



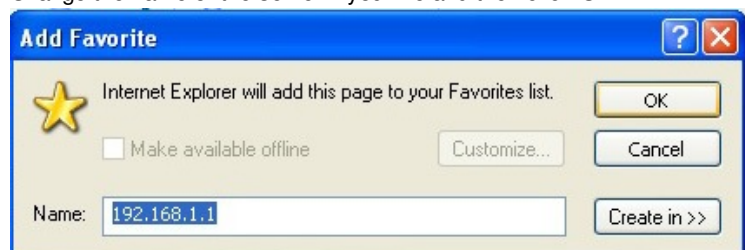
3. After you logon you can add the site to you **Favourites** for easy access to the FTP server.

Click **Favourites**

then **Add to Favourites...**



Change the name of the server if you like and then click **OK**.



If you have inserted one USB storage device you will see a folder named USBDisk_1. Double click the **USBDisk_1** folder to see the folder structure and the files on stored your portable device.

By default, the FTP server is already enabled but can be disabled if you desire. If you would like to re-configure the parameters of the FTP server, do as follows.

1. Start your Internet Browser and type the following IP address <http://192.168.1.1> into the address bar and press **Enter** on your keyboard.
2. When prompted, use the following details to log into the configuration utility page:

User name: **vodafone**
Password: **vodafone**
3. The configuration page will open as shown in the screenshot below.

From the left hand menu under the heading **Home Network** select **FTP**.
4. If the FTP service is Disabled select **Enabled**. You can change the default FTP Server UserName and Password as desired.
5. Click **>OK** to save your changes.

The screenshot displays the Vodafone DSL Router configuration interface. On the left is a sidebar menu with sections: 'Vodafone DSL Router' (containing Service Status, Applications, Router, Telephony, WiFi, HSPA, Administration), 'HOME NETWORK' (containing Connected Equipment, Hard Disk, Printer, and FTP), and 'SUPPORT' (containing Troubleshooting). The 'FTP' option in the HOME NETWORK section is circled in red, with a red arrow pointing to it. The main content area shows the breadcrumb 'Home > Accessories / Ftp' and the title 'Ftp Server parameters'. Below the title is a message 'Your service is enabled.' and two radio buttons: 'Enabled' (selected) and 'Disabled'. Further down is a section titled 'Ftp Server parameters ?' containing four input fields: 'UserName:' with 'vodafone', 'Password:' with masked characters, 'Confirm Password:' with masked characters, and 'Port[1-65535]:' with '21'. A red circle highlights the '> OK' button at the bottom right of this section.

---End